

# ZDA "Bridge" Functionality & Tools Available

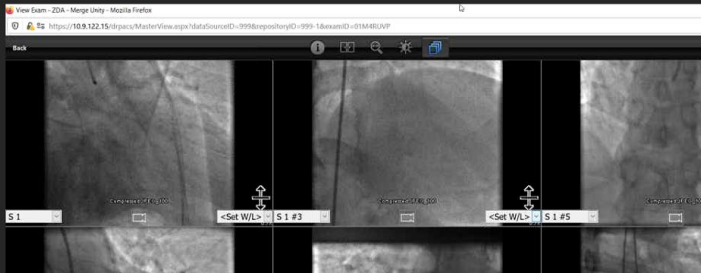
	Mobile viewer	Desktop w/Flash (EOL 2020)	Mobile viewer	Desktop no Flash
<b>ZDA exam list – no material change for these shared capabilities*</b>				
User access rights, audit trail, exam search, break the glass, play voice clips, view text notes, display priors including patient link, display PDF reports, exam properties, image annotations, montage & document images	✓	✓	✓	✓
<i>*additional steps or ways of using some of these capabilities are slightly different in some cases</i>				
<b>ZDA exam list – no change to desktop-specific capabilities</b>				
Search online records by: Last Name, First Name or Patient ID		✓		✓
Advanced Search / Search Archive - Search online or Archive		✓		✓
Refresh the Search List		✓		✓
View external reports from main ZDA menu		✓		✓
<b>ZDA image viewer capabilities – supported by the bridge</b>				
Series - organize as per PAT file, select series to display, series scrolling	✓	✓	✓	✓
Tools - window level, magnify with roaming, cine, toggle annotations on/off, notes	✓	✓	✓	✓
Display modes: montage, images, documents		✓		✓
External launch - launch from report, launch from EMR		✓	✓	✓
<b>ZDA Image Viewer capabilities – not supported by the bridge</b>				
Tools - magnify drag and select, measure, COBB angle, 3-point angle, 3D cursor, ROI tool, rotate/flip, invert grayscale, ALL mode, Z3D tool		✓		
Display – switching series to image per sq, display comparison exam, image viewer settings/reset, slice lines while scrolling series images, UI shortcuts in image viewer		✓		

## Exam List

- ✓ Exam grid
- ✓ Search and Advanced Search
- ✓ Search Options
- ✓ Filters
- ✓ View All/Most recent/Unread only
- ✓ Switch data sources
- ✓ Exam properties
- ✓ Patient properties
- ✓ Prior exams w/Patient Link
- ✓ Voice clip
- ✓ Notes – text and audio
- ✓ Reports (in PDF)
- ✓ External Reports
- ✓ Images
- ✓ Montage
- ✓ Break the Glass
- ✓ Obeys access restrictions
- ✓ Auditing
- ✓ Inactivity auto-logout

## Image Viewer

- Based on Mobile ZDA Image Viewer
- Pre-caches 100 images (instead of 30) for best user experience
- Subset of tools from old Flash viewer



# ZDA Bridge\* Image Viewer Tools

## Have

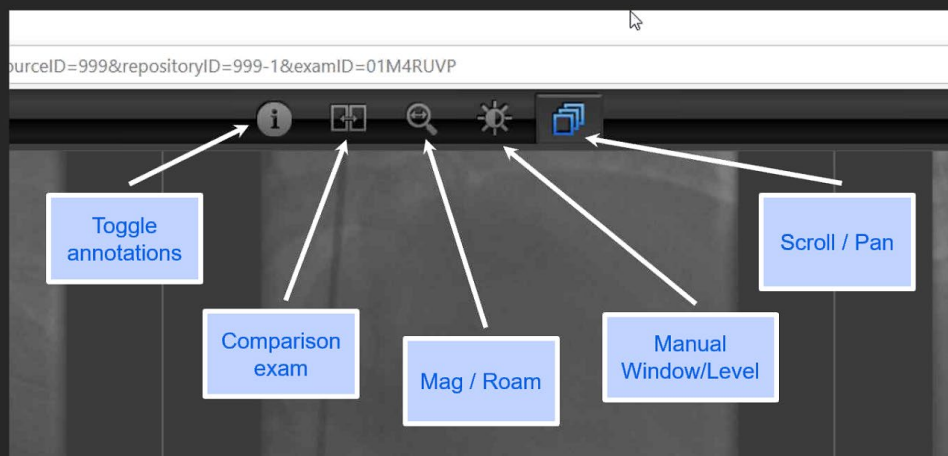
- ✓ Toggle annotations
- ✓ Comparison exam
- ✓ Mag/Roam
- ✓ Manual W/L
- ✓ Pan/Scroll
- ✓ Select Series
- ✓ Cine
- ✓ LUTs & W/L Presets
- ✓ Toggle 1-up

## Don't have

- X Measurements
- X ROI
- X Rotate/Flip
- X Invert Grayscale
- X "All" mode
- X Click-and-drag Mag
- X 3D Cursor / Slice lines
- X Z3D
- X Switch image vs series per square
- X Image viewer settings
- X Reset image view
- X UI shortcuts

## Image Viewer

These tools are along the top, not the side



## Image Viewer

These tools are at the bottom of the image square

