

ACCESSING RADIOLOGY IMAGING

The Radiology Imaging web application (rad.sbch.org) will be placed behind the CottageGo portal.

Accessing Radiology Imaging from CottageGo

Once logged into the CottageGo Portal (CottageGo.sbch.org), you can select the Radiology Imaging button.

1. Select Radiology Imaging link



2. Enter your DR Systems credentials.



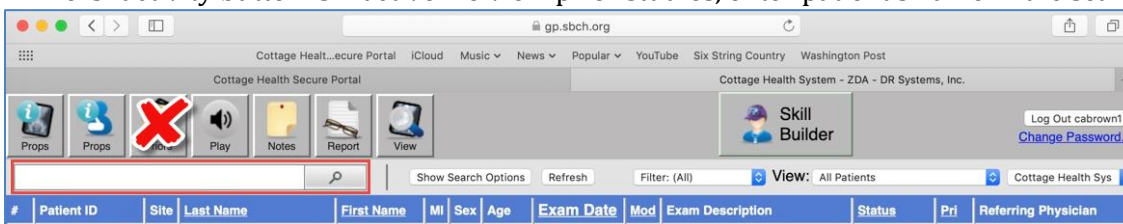
Browser Compatibility for Windows

Browser	Compatibility
Windows Internet Explorer - *Recommended*	Compatible with no browser adjustments required
Edge for Windows	Compatible with one time flash/browser configurations needed (instructions follow)
Chrome and Firefox	NOT COMPATIBLE

Browser Compatibility for Mac

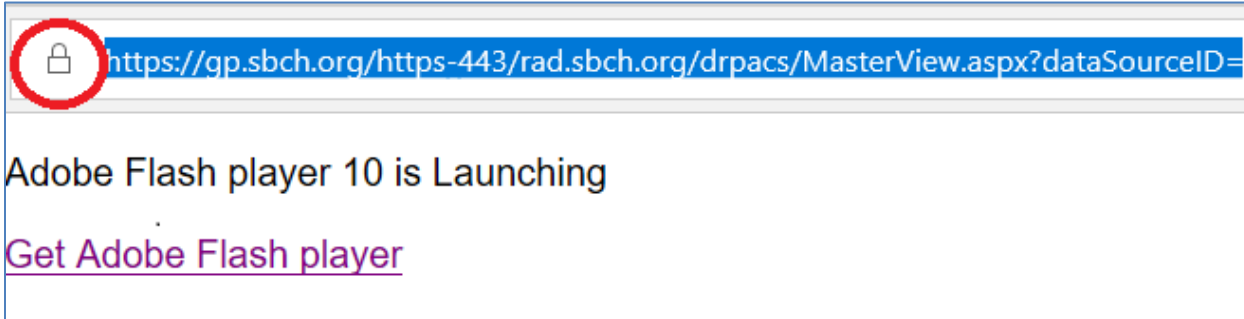
Browser	Compatibility
Safari	Functional*
Chrome and Firefox	NOT COMPATIBLE

*"Priors" activity button is inactive. To view prior studies, enter patient's name in the search field.



Microsoft Edge “Adobe Flash Player 10 is Launching” Error Resolution

1. Install Adobe Flash or update to the latest version if already installed.
2. From the error page, click the Lock Icon.



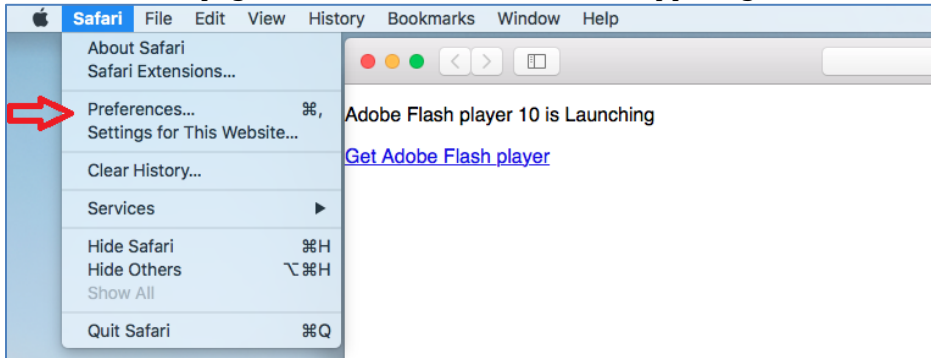
3. Select “Allow Adobe Flash” link.



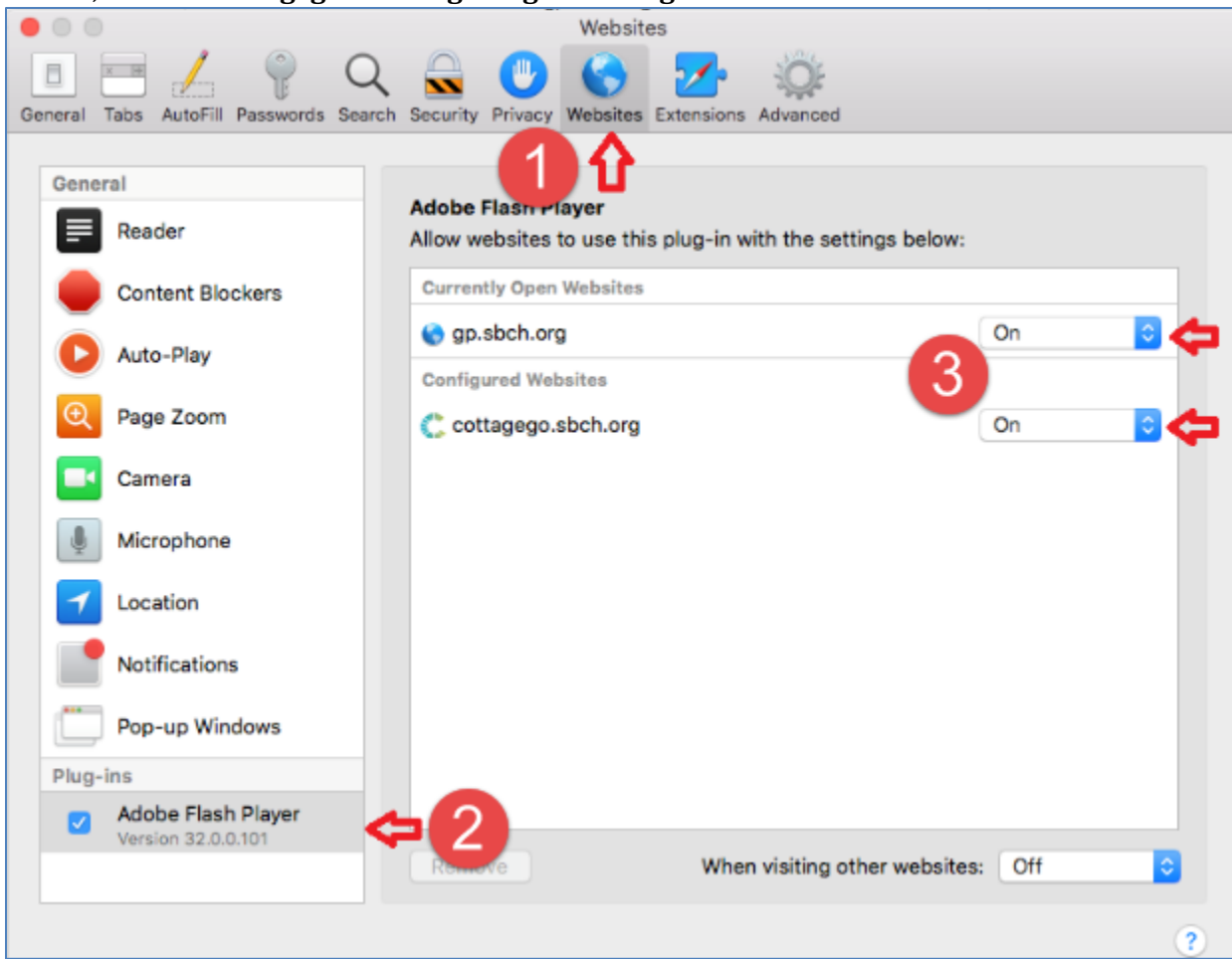
4. Refresh the browser.

🍏 Safari “Adobe Flash Player 10 is Launching” Error Resolution and Pop Up Blocker

1. Install Adobe Flash or update to latest version if already installed.
2. From the Error page, select the Safari menu on the upper right left of the screen, and select “Preferences”

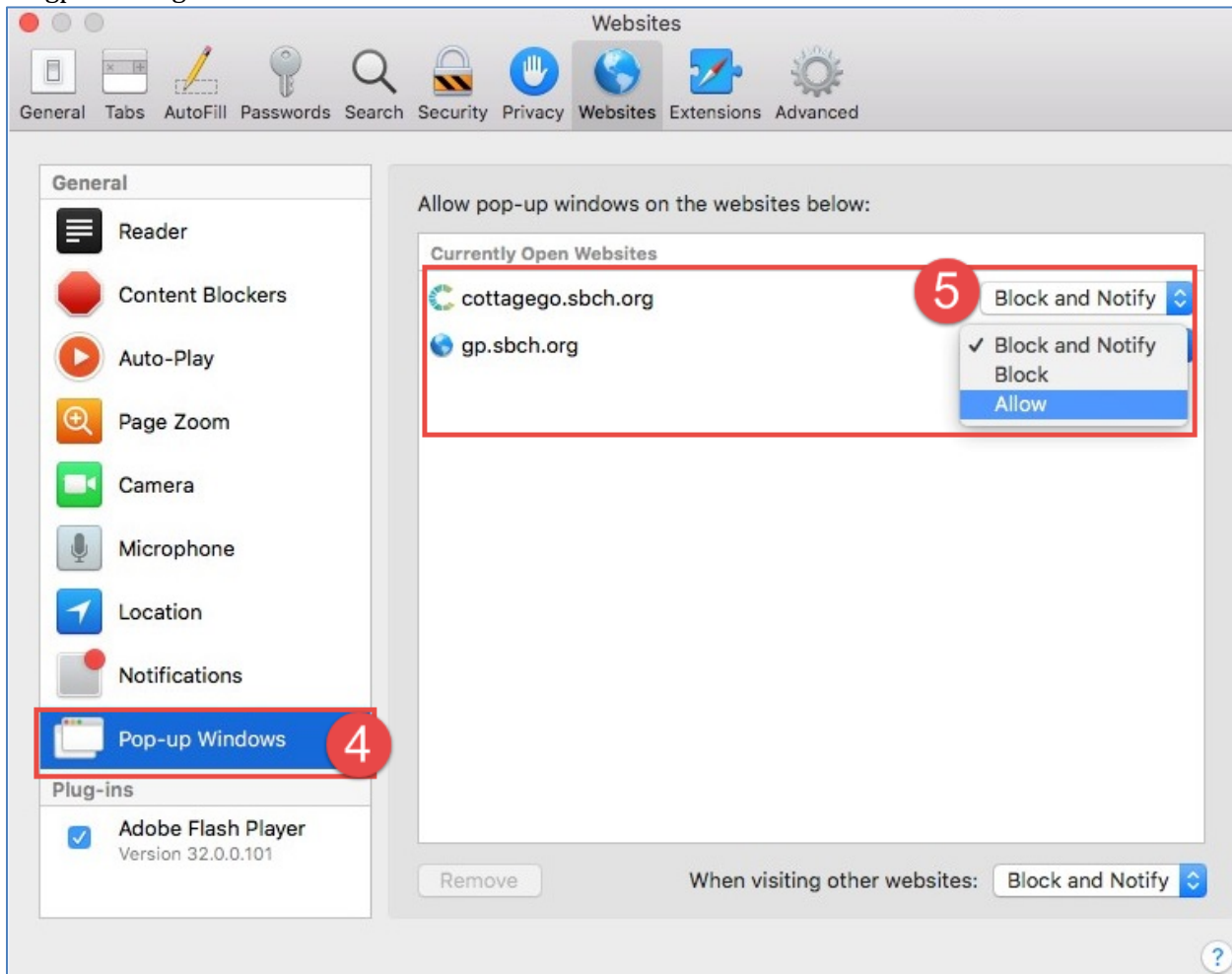


3. Select the “Websites” Tab. Ensure that “Adobe Flash Player” is checked. Within the Currently Open Websites section, set both **cottagego.sbch.org** and **go.sbch.org** to “On”.



4. Once the changes are made, follow the instructions to allow pop ups.

5. Select the Pop-Up Windows section, indicate that you would like to “Allow” pop-ups from cottagego.sbch.org and gp.sbch.org



6. Once changes are made, close the browser completely and restart your session.